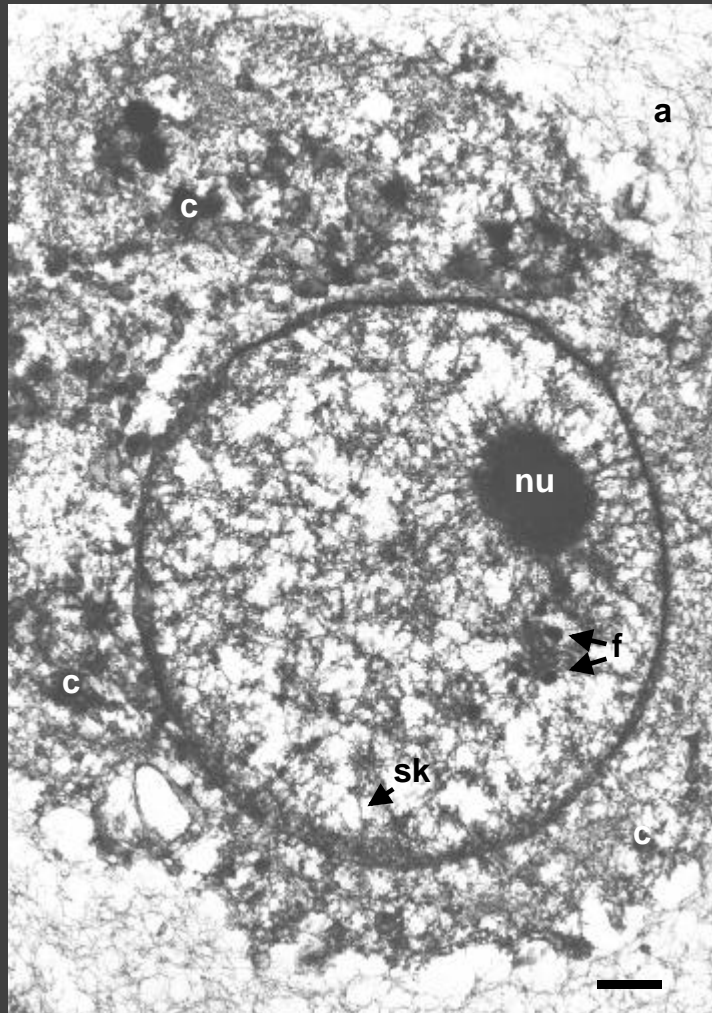


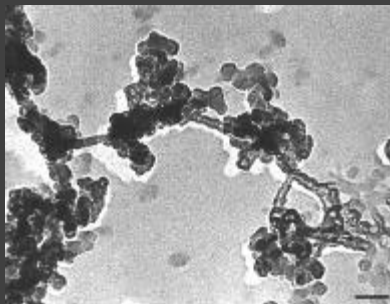
Chromatin-depleted nucleus

Lyse, cut with *EcoR1*, electroelute chromatin fragments, image thick resinless section



Courtesy: P Hozak

Reprinted, with permission, from P. Hozák *et al.* (*J. Cell Sci.* 107, 2191-2202); copyright © 1994 Company of Biologists Ltd.



Courtesy: DA Jackson

Reprinted, with permission, from D.A. Jackson and P.R. Cook (*EMBO J.* 7, 3667-3677); copyright © 1988 Oxford University Press