


[About Amnis](#)
[Products](#)
[Applications](#)
[Technology](#)
[News](#)
[Events](#)
[Careers](#)

What's new at Amnis

[Amnis Granted Eight New U.S. Patents for Its High Speed Cell Analysis Platform](#)

[Visit us at ICI/FOCIS 2004](#)

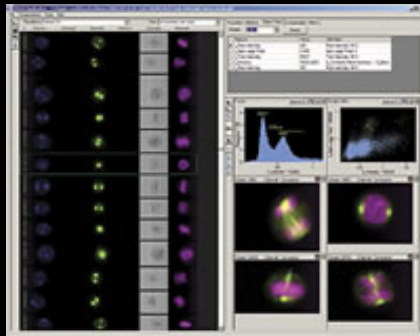
[Amnis Announces Installation of ImageStream® System at the Cell Systems Initiative, University of Washington](#)

Sign up for Newsletter

You can learn more about the exciting capabilities of the ImageStream system by subscribing to our email newsletter, The Stream Line. The newsletter contains information about new applications of the ImageStream system, along with new scientific reports and technical tips.

[To subscribe to the Stream Line email newsletter, click here.](#)

You're looking at a revolution in cell analysis.



Amnis has created an entirely new way to analyze cells. The ImageStream® System combines, in a single platform, the powerful population statistics of a flow cytometer, the detailed visual analysis of a microscope and the analytical muscle of advanced image processing software. This unique combination creates opportunities for cell analysis that have never existed before.

The ImageStream® System works like a flow cytometer, analyzing hundreds of cells per second and generating robust, detailed population statistics. But it also visualizes like a microscope. Every dot in the scatter plot is associated with up to six images of the corresponding cell. These images reveal fine structure details of cell morphology, while the population analysis allows statistical rigor and detection of rare events.

The applications of ImageStream technology span the fields of research, drug discovery, diagnostic and clinical analysis. Whether the need is to identify specific cell sub-populations, evaluate cellular responses to external agents, characterize cell-cell interactions or map cell surface markers, the ImageStream System offers an entirely new approach with exceptional power and flexibility.

We call it 'thinking outside the dot'. You'll call it revolutionary.

Early Access Program

Amnis is currently arranging placement of the ImageStream® 100 with a limited number of Early Access partners. In addition to many important system benefits, participation in the Early Access program offers a unique opportunity for close cooperation with Amnis scientists and engineers. To find out more about participating in this valuable program, please email EarlyAccess@amnis.com or call 206-374-7000.

